

# SPYBOT SEARCH AND DESTROY

## Installation Procedures

---

### — System Requirements —

#### **Hardware and Operating Systems**

- Microsoft Windows 95, 98, ME, NT, 2000 or XP
- Minimum of 10 MB free hard disk space, more recommended for updates and backups

#### **Web Browsers**

- Internet Explorer 5.5 or 6

### **I. Introduction**

The purpose of this document is to instruct DAREs in the installation of Spybot, an adware and spyware detection utility. Spybot - Search & Destroy can detect and remove spyware of different kinds from your computer. Spyware is a relatively new kind of threat that common anti-virus applications do not yet cover. If you see new toolbars in your Internet Explorer that you didn't intentionally install, if your browser crashes, or if your browser start page has changed without your knowing, you most probably have spyware. But even if you don't see anything, you may be infected, because more and more spyware is emerging that is silently tracking your surfing behavior to create a marketing profile of you that will be sold to advertisement companies.

#### ***What is Spyware?***

In easy terms, spyware is software that transmits personally identifiable information from your computer to some place on the Internet without your knowledge. Spyware is typically not the application you downloaded and installed intentionally, but small snippets of code copied to your computer that is self-installing. Once copied to your system, you cannot delete them. Many times the small print of software agreements you are required to accept contain some vague reference to why these add-on components are initially copied to your system. Buried in the license agreement you'll find lines of empty jargon and rhetoric legitimizing a software vendor's attack on your computer system. This is a scam that you need to be aware of.

A less threatening sort is adware. Adware is similar to spyware, but does not transmit personally identifiable information, or at least the collector promises not to sell it. Instead, aggregated usage information is collected. Adware is also often a side effect of spyware, as both monitor you for the sole purpose – delivering advertisement that is especially tailored to your habits.

Another kind that is detected under the spyware category is tracking cookies. Cookies are used all over the Internet. Advertisement companies often set cookies whenever your browser loads a banner from their web page. The ad's cookie then tracks every web page you browse that contains their ads. They do this to generate revenue. The cost to you is a slower, less responsive system. Your disk drive fills with useless temporary, junk files. Your startup routine loads multiple spyware programs, running in the background, slowing boot time and degrading memory resources. In time, your system's resources are exhausted and the system crashes for no apparent reason.

## II. Installation Instructions

The software installation wizard has been configured for you. To run it, execute the program "spybotwin2k.exe" found in the shared directory, "Install Shortcuts on quark." Launch the wizard and accept all the default parameters. When the installation completes, you will need to enter your BA domain userid/password into the scheduler so that the program will automatically launch and execute once a week. Setting the Spybot Scheduler is explained in the next section, "III. Setting the Scheduler." Before you do that, you'll need to install the program first, by following the instructions below.

### ***Installing the Application***

1. Map a drive to \\quark\Install Shortcuts
2. Double Click the program <spybotwin2k.exe>
3. The Installation wizard will launch
4. Press the <Begin> button (see Figure 1. Installation Wizard) and accept all the default parameters

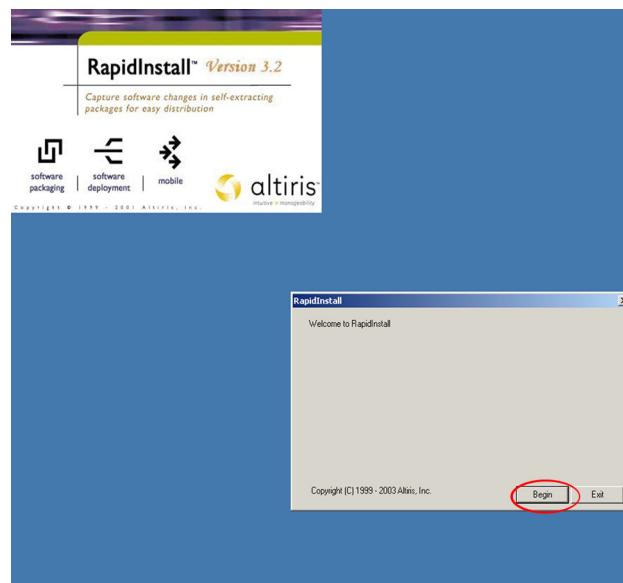


Figure 1. Installation Wizard

## III. Setting the Scheduler

### ***Scheduler Settings***

The Scheduler page allows you to add an entry to automatically run Spybot-S&D in Window's scheduler. To do this, you first have to click the Add button, and then set the necessary properties (scheduled time etc.) through the Edit button. You can remove a task later on by using the Remove button. Custom options that you will see are checkboxes to decide if you want to automatically fix problems after the

scheduled scan, and to close the program after scanning/fixing has finished. However these parameters have already been set up for you by BIDS. The only entry you'll need to make is entering your BA domain userid/password so that the program will automatically launch, using your credentials, so that there is no action needed by the user.

### Instructions

1. Launch the program, Start | Programs | Spybot – Search & Destroy
2. From the menu bar, select <mode> | <advanced mode>
3. Click <Settings> from the navigation bar located on the left side of the screen
4. Select <Scheduler>
5. Select <Edit>
6. Enter your domain userid password in the <Run As> box (see Figure 2. Scheduler) and press the <Set password> button

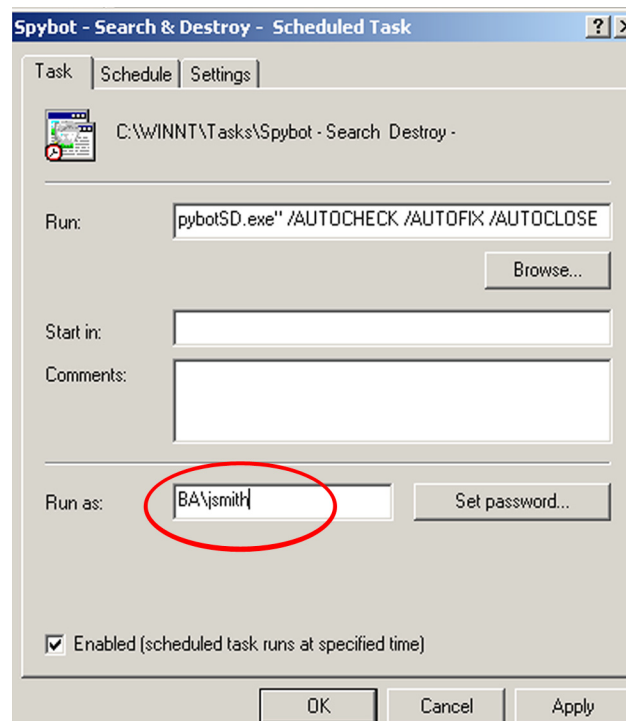


Figure 2. Scheduler

7. Enter your password two times, then press the <OK> button
8. Reset the mode back to <default>
9. Exit the application

Kolla, Patrick M.

2004 SpyBot - Search & Destroy Freeware. Safer Networking Limited: Dublin, Ireland. <http://beam.to/spybotsd.webmaster@spybot.info>.